



## March 2014

**POKE RUN  
PRESBYTERIAN  
CHURCH**

### INSIDE THIS ISSUE:

Thank You/Office/ Treasurer	2
Happenings/World Day of Prayer	3
Lenten Services/TGIF	4
Ross Farewell	5
Poke Run Deacons	6
PW/More photos	7
Poke Run Session	8
One Great Hour of Sharing/Soup	9
VBS/Sunday School/ Prayers	10
Mission/2014 Grads	11
Thank You /History	12
CALENDAR	12



We read from the Bible every Sunday. We read a good bit of Scripture actually. We read a passage from the Old Testament, and then we read two from the New Testament. One of these readings is from the Gospels; the other is from one of the remaining books of the New Testament. We also read responsively from the book of Psalms. In addition the readings for the time of confession are drawn from Scripture, as are most of the words that open the worship service. Scripture wraps itself around and winds its way through the entire service. Why?

An easy answer is that we are “a people of the book,” the book being the Bible. That is true but this is a somewhat circular answer. More fully, we inherit from the Reformation something called, in Latin, “*sola scriptura*.” This means that we look for truth in Scripture alone, or, the Bible is the only reliable source of truth regarding our eternal salvation. Everything is secondary to that. It does not matter if we are healthy, wealthy, and even wise. It does not matter if we understand all the complexities of science. It does not even matter where we are in the World of Warcraft or any other game. What matters is our relationship to God in Jesus Christ. Only that matters! And that is why we surround ourselves with texts from the Bible. It is the Bible that tells us God’s story, or reveals God to us, or contains the

word of Life, which is Jesus Christ. Many ways exist to say this but they all point in one direction. The Bible alone reveals God’s will for us and brings us face to face so to speak with Jesus Christ.

History reveals much about the ways the church thought about Scripture through the ages. I believe it also brings to light many of our current challenges and shows why we are locked into so many struggles within our own denomination. We have left Scripture behind. In the early stages of the reformation, loosely the late 1400’s and early 1500’s a man named Ulrich Zwingli preached a sermon to a group of nuns. He outlined for them the Bible as the very words of God. Note that this is different than saying that the Bible is the Word of God or that as most mainline churches would claim today, the Bible contains the Word of God or with less power, the Bible points to the Word of God. Now if you had the time you could read through the statements of the major theologians of the church and discover that in each successive generation there was a gradual move from the Bible as the Words of God to the Bible as God’s Word to the Bible is simply another human book and we can choose to live by it or ignore it or bend it any which way we please. This is how we have come to believe all sorts of imaginary and dangerous stuff. We have come to the point

where Bono of U2 says that he never listens to Christian witness because it is so insincere. The church is becoming irrelevant not because it does not sing the right songs or serve the right coffee or change its pews to nicely padded seats, but because it no longer sees Scripture as the source of its life. We no longer have the Word of God much less the words of God.

Reformation lies again at the doors of the church. You and I may or may not live to see it come to fulfillment. God acts in God’s time, sometimes immediately, sometimes over thousands of years. History teaches us that God will not abandon his people or Christ’s Church. Since we sense this reformation it seems a good time to preach a few verses of Isaiah the old way, a verse or two at a time, as God’s words to us in our time. This is what we will do in the weeks leading up to Easter Sunday, following Isaiah’s anticipation of the coming Christ through the prophetic vision given to him by the Holy Spirit. Come and join us and you may be part of the new world that God is creating as we turn to Him in Christ Jesus by continuing the faithful proclamation of Scripture and witnessing to it in our daily lives. Come, and hear the Word of God read, and by the Spirit, hear the words of God.

by Pastor Pete



## Thank You

**Thank you to our February Greeters:** Boy Scout Troop 552 & Cub Scout Pack 500, Ron & Carole Bowman, Mario & Bev Tagliati, and Bob & Margaret McBride

**Thank you to our February Lectors:** Jeff Wilkinson, Linda Chicka, Heidi Hileman, and Douglas Bruce

### From the Poke Run Office

The Poke Run Annual Report for 2013 is now available. Copies have been placed in the Narthex or you can request an electronic copy by contacting the Church office. 724-327-5563.



#### In preparation for the 2014 Directory, Information Needed

Please notify the church office if you have had any name changes, address changes, a change in your phone number or a change in your email address. You may call the office at 724-327-5563 or email your information to [pokerun@windstream.net](mailto:pokerun@windstream.net)

An updated **Directory** will be published in May.

Thank you.

### FIRST FRUITS

Poke Run Church has committed \$3,125 to Redstone Presbytery as part of their 2014 First Fruits campaign. Budget & Finance suggests a donation of \$30.00 per person for the year. Please help Poke Run meet this Redstone Presbytery campaign commitment.

Your giving is important and appreciated.

Budget & Finance Committee



**Canon Copier staple cartridges available.** The office has a supply of Canon copier staple cartridges that are not compatible with our new Kyocera copier. If you know of an office or organization that could use these, please contact the Church office. DETAILS: Canon Staple =J1 - 15 cartridges are available.



### **HAPPENING IN OUR PRESBYTERY**

Mar. 1 PA Sings—1pm First Presbyterian Church of Greensburg

Mar. 4—Pancake Dinner 5-7pm Congruity Presbyterian Church



Mar. 23—"The Pittsburgh Gospel Choir" 7pm Delmont Presbyterian Church

Mar. 29—Redstone Presbyterian Women "Spring Gathering," Colver Presbyterian Church, Colver, PA, see Laurie Martin for more information.

**Pine Springs Camp "Summer 2014"** Click on the image at right for more PSC info.

Information pamphlets are available in the church office. Poke Run continues its pledge to send all campers to Pine Springs at no cost—call the office if you are interested.

### **HAPPENING IN OUR COMMUNITY**

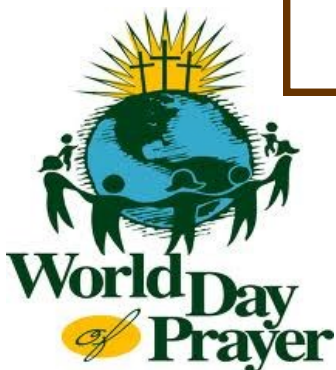
Mar. 8, 7pm Thiel College Choir (Poke Run's Lizzy Wilkinson) concert at St. Paul Episcopal Church, 1066 Washington Rd, Pgh PA 15228—Mt Lebanon

MAY 3RD 7am-5pm—Annual "Spring Dumpster Day" at the Washington Twp maintenance bldg. on Rt. 66—two truckloads per household, some restrictions apply.

Blood Pressure Clinic for Seniors— Monthly on the 2nd Wednesday at the Wash. Twp. Firehall 11:30am—noon

Bring your table service and a covered dish.

Women, men and children in more than 170 countries and regions will celebrate the "World Day of Prayer." on Friday, March 7th. More information is available at [wdp-usa.org](http://wdp-usa.org).



WEDNESDAY EVENING  
COMMUNITY LENTEN SERVICES

*Please Plan to Attend the Community Lenten Services*

Each year our community joins in worship as we prepare for Easter. Services vary in location, featured music and leadership.

All services will begin at 7:30 p.m.

Ash Wednesday

March 5, 2014

Union Presbyterian Church (656 Route 380)

Led by Rev. Lanny Mellinger

March 19, 2014

Pine Run Presbyterian Church (517 Markle Rd.)

Led by Rev. Pete Goetschius

April 2, 2014

Poke Run Presbyterian Church

Led By Rev. John Simpson

April 16, 2014

Pine Run Presbyterian Church (517 Markle Rd.)

Led by Rev. Lanny Mellinger



*An offering to go to the Presbyterian Disaster Assistance program will be taken at each service. None of the services will be cancelled in the event of bad weather. Please use your own discretion in making the decision to attend.*



Plans are underway for Poke Run's annual "TGIF" program held for our community youth on Good Friday.

Mark your calendar and stay tuned. April 18, 2014

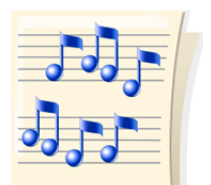


On Sunday, February 23rd, the Poke Run Community gathered to wish ***Glenn and Mary Ellen Ross*** farewell as they relocate to Belleville, PA. Lunch was enjoyed after the late Sunday Worship service. The Congregational Life Committee would like to thank all who contributed to the lunch or helped in any way.

Their new address is: 134 Poe Street  
Belleville, PA 17004



*"God be with you 'til  
we meet again"*



### From the February Deacon Meeting

Opening devotional by Jan Fitzgerald

\*Jan Fitzgerald, co-moderator, passed out updated Deacon Contact list, Friends list (shut-ins) and 2014 Communion schedule.

\*Cindy Brooks volunteered to represent the Deacons at the Budget and Finance Meetings.

\*Palm Sunday Luncheon to be discussed in more detail closer to Easter.

\*Friends of Poke Run Church re-assigned for 2014

\*Pretzels for Friends to be made before Valentine's Day.

We went over all the Deacons commitments and tentatively assigned chair persons to share in the responsibilities.

Flowers for Easter and Christmas; Mario Tagliati and Debbie Seighman

Giving Tree at Christmas; Linda Moorehead

Watkins Sale in October; Cindy Brooks

College Students packages; Jan Fitzgerald

Christmas Eve Service – Communion; Jan Fitzgerald and Nikki McQuaide

Baskets at Easter, Thanksgiving and Christmas; Tammy Kelly, Karen Staymates and Jacob Slaughaupt

Discussed the need of guidelines for the Deacon Committee, Jan Fitzgerald volunteered to set this up.

Next Meeting will be March 3, 2014 at 7:00 PM

Pastor Pete Goetschius closed in prayer



### **Deacons Easter Flowers**

Deacons will be taking orders for Easter Flowers through March 30th. Order forms can be found in the bulletin or in the office. All flowers are \$8.50 and order forms must be turned in by March 30th.

Lilies, Tulips, Hyacinths and Chrysanthemums!

### **Deacons Easter Baskets**

Also the Deacons will be making "Easter Food Baskets" for those in need. Orders for food baskets are needed by April 6th. Delivery on April 12th.





## Poke Run Presbyterian Women PW



### Attention "ALL" women of Poke Run -

### The PW (Presbyterian Women) Quarterly Meeting

will be on Tuesday March 4th , at 7pm in Fellowship Hall. The Hostess and the program will be presented by the Participating Women and Circle 4.

*Join in this time of information & fellowship!*

**Circle 2:** will be meeting but plans are "Currently Under Construction!"

**Circle 4:** will be meeting on Thursday, March 13th, Jane Blair will be the hostess.

PW is still collecting shoes as part of the "ShoeBox Recycling Project." - There is a box in the Narthex for your contributions. All gently worn, paired men's women's and kids shoes that are still reusable and re-wearable. Please no ski boots, winter boots, skates, roller blades, flip flops, crocs, bedroom slippers or single shoes. **CHECK YOUR CLOSETS!!!**



Thelma McCutcheon (pictured here with grandson Chad,) recently celebrated her 86th Birthday!



Poke Run's Handbell Choir will meet on Thursday evenings at

6:15 pm during the season of Lent. Join them if you have an interest.

### **From the January 2014 Poke Run Session Meeting**

Rev. Peter Goetschius, Moderator opened the meeting with prayer and devotions.

**MSC:** Connie Cauvel Clerk of Session

**MSC:** Chad McCutcheon Assistant Clerk of Session

**MSC:** Amy Wilkinson Treasurer

**MSC:** To approve the Session Minutes of December 10, 2013

**MSC:** To accept the Deacon Minutes of December 2, 2013

**MSC:** To accept the Trustee Minutes December 10, 2013

**MSC:** To approve Amy Wilkinson as Treasurer

**Budget & Finance:** Tim Martin

Financial giving in 2013 was faithful and strong and our investments did well.

**Christian ED and Youth** – Sandy Chappell

Erin Bruce will continue to teach Sunday School, but she is unable to chair the committee and hold monthly meetings. Sunday School Classes are going well.

**Mission and Stewardship:** Linda Chicka

Pretzel making with Adelphoi will be February 7 at 6 pm. Mission Trip: June 15 -20, 2014. Food Bank Dates for 2014: Saturday February 15 Saturday April 26 and August 16

**Congregational Life:** Connie Cauvel

The committee set 2014 dates and planned for the year.

**Technology** – Chad McCutcheon

Facebook continues to go well. Church members are encouraged to go to Poke Run's page "like" and "share" the page. Special thanks to Laurie Martin for posting the Daily Bible Scripture.

**Nominating** - Cindy McQuaide & Bob Thompson - Pete will meet with the Committee after Easter.

**Old Business:**

**MSC:** To Approve 2014 Calendar

Ask Trustees to consider taking a closer look on repairing more of the road, beyond the Pavilion.

New Poke Run Signs at each end of Poke Run Road done by Signs of Excellence. We discussed the size of the placards to hang under the sign. Ron will contact his friend to see if we can use Aluminum for the placards for our Church events.

**New Business:**

**MSC:** Saturday March 29, Andy Caldwell to use fellowship hall for Shriners Fundraiser.

**MSC:** Saturday April 12, 2014 Shriner Hillbilly Event in Fellowship Hall and outside.

(Connie will check with the Deacons to coordinate the schedule with their preparation for Palm Sunday Church dinner.)

**MCS:** To approve the Communion Schedule and guidelines for 2014

Close with prayer: Meri Slaughaupt





This year as we move into Lent and prepare for One Great Hour of Sharing, we can be grateful for the transformations made possible through this special offering. In places like Eugene, Oregon, New Orleans, Louisiana, and the many other recovering communities along the Gulf Coast, those most in need are finding hope and help through the work of Presbyterian Disaster Assistance, the Presbyterian Hunger Program, the Self-Development of People program, and their partners in ministry. In this media-driven environment of “the next big story,” it is easy to become distracted from the reality faced by our brothers and sisters around the world where poverty, disaster, and war cause displacement and suffering.

This is why we continue to give to One Great Hour of Sharing. When we give this year, we give in faith—knowing that staff in the three One Great Hour of Sharing programs will be responding in Christ’s name to the cries of our sisters and brothers throughout the next year. We trust that they will respond as they did in Newtown, Connecticut and in the wake of the devastating spring storms that ravaged both Oklahoma and Texas: immediately, directly, and through our partners wherever the emergency occurs. But equally important, we know that they will remain in areas of devastation long after the news cameras have moved elsewhere as they continue rebuilding both lives and communities.

Feeding the hungry, helping people build up their own livelihoods, responding to disasters—these are all ways that your gifts to One Great Hour of Sharing are changing lives, changing communities, and changing the world. We’ll read about examples of this in the bulletin inserts leading up to the Offering being taken on Easter Sunday.

Since 1949, Presbyterians and have participated in this Lenten offering. This year, prayerfully consider how you will contribute. Coin banks bank will be available in the back of the church and offering envelopes will be available in the pew holders for your gifts from now through Easter.

**Please join us for our monthly free**

*Community “Soup for the Soul” Luncheon*

*AND BRING A FRIEND!!!!*

**March 12, 2014**

Doors open at 11:30am

Soup’s on at NOON!

*“New England Clam Chowder”*





**MARK YOUR CALENDAR!!!**

**And tell your friends!**

**Poke Run VBS is**

**scheduled for July 20—24, 2014.**

**Click on the emblem to the left for more info.**

### Sunday School at Poke Run Church

Classes meet each Sunday at 10am.

There are age specific classes for Children and youth.

We have two adult classes:

The class meeting in the West Wayside room (on the left at the end of the hall) uses the David C. Cook series titled "Jesus' Fulfillment of Scripture—Studies in the Old and New Testament"

The class meeting in the Session Room (on the right at the end of the hall) is working through a study guide from Max Lucado's Life Lessons series. "Galatians, Free in Christ"



*For our prayers* Thelma McCutcheon, Conrad McQuaide, Mim Smith,

Clifford & Karen Lightner, Irene Clark, Irma McDivitt, James Powers, Carolyn Buckley, Steve Morcheid, Robin, Tom Kimble, Grace Young, Amy McQuaide, Bob Bierer,

Lil Bowman, Ethel Brewer, Pat Lengauer, Norm Linhart, Joanne Fitzsimmons,

Jim Thompson, Leland & Berenice Jones, Kristen Fairbaugh, Jean Campbell,

Tom Martin, Helen Grayem, Sandy Nemetz, the Davis Family, Anna Mae Chicka, Roberta Caldwell, Lee & Linda Gardener, Geniene Ciuca, Joseph Silvis, Kiara Hawk, Linda Steele, Deb Wiester, SSG James Bishop (Poke Run's "adopt a soldier") and others who serve in the military.

## Poke Run Mission Team Returns to Marion, Virginia

After a year of absence, Poke Run will once again be heading to Marion, Virginia to join hands with Project Crossroads for a week of mission work this summer. Scheduled for the week of June 15 through 20, we will be involved in work ranging from general repairs, painting, landscaping, siding, carpentry and only the Lord knows what else!



Project Crossroads is a ministry developed and supported by the Methodist Church. Poke Run has worked with this project since 2008 and we have formed some very close and blessed relationships with the organizers of the project. Besides the physical work we do to improve the home situations of elderly, handicapped and low income residents in the Marion area, we have found that sharing our love of Christ with these residents to be the most rewarding and cherished moments of our trip.

Applications are now available for anyone interested in attending the mission trip to the Marion Virginia area on the week of June 15 through 20, 2014. If you are interested in traveling with the team this year, please pick up an application from the back of the Narthex, from the church office or download an application from the church website at: [www.pokerunchurch.com](http://www.pokerunchurch.com). We ask that all registrations be turned in by Monday, May 12, 2014. An informational meeting will be held on Monday, May 12 at 7:30 in the Church Lounge. The final planning meeting will be Monday, June 9 at 7:30p.m. Watch the Ranger and bulletin for more information as plans for the trip develop.

There is always room for more individuals to travel with us. We encourage you to go for the entire week, but if that isn't possible, please consider a portion of the week. If you have a neighbor or friend from another church who would like to attend, please pass this information along to them. Prayerfully consider how each of you might join us in this special week. We need people to cook, to visit and talk with the residents, and those that can work or are willing to learn how to do the work. For those who can't travel with us, we need your prayers and financial support. For more information on how you might join hands with us, please see or call Linda Chicka at 724-422-3688 or the Church office at 724-327-5563.

[Click Here for an Application and Information Sheet](#)

**"His H.E.M. Thrift Store"  
in Washington Township.  
Has relocated to the  
same complex as Come'n  
Play Daycare.**

Click Below for more information.

**His Hem**

Please contact the office if you have a 2014 graduate in your life. We would like to recognize Poke Run's graduates, high school, college, etc. and certainly share good news of those you love. Please submit your grad information by April 11th.



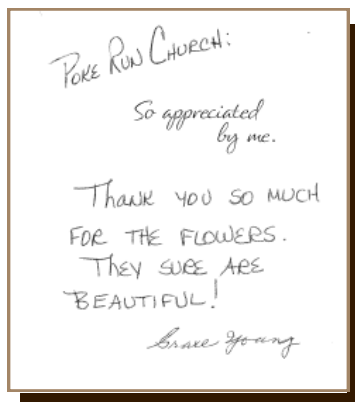


This painting, located on the south wall of the Narthex was pictured in a past Ranger—hoping to get some information on its origination. Don and Pat Lengauer provided some leads—but we are hoping for more. Maybe the following will spark a remembrance from you. Contact the office if you know anything about the painting, such as when it was done or when it was donated. “The painting was created by Barbara Kerstetter, who was a local artist, perhaps in the Washington Road area. It is believed that the painting was based on a photo provided by a local photographer Tommy Thompson, who perhaps had a Poke Run tie through the Boy Scout troop meeting here.”

Our next project is the piece of art seen below featuring the cardinals. This can be seen above the door to the sanctuary from the Narthex and a marker says “In Loving Memory of Edith Christy Weigand and W. Glenn Weigand by their Children.”



From Grace Young who recently celebrated her 110th birthday!



POKE RUN HISTORY—long and rich. The office is constantly finding interesting tidbits—and many members submit even more! It was interesting to see that 40 years ago, Poke Run valued some of the same things we care about today, the March 1974 Ranger talked about “One Great Hour of Sharing,” praying for those among us in need and celebration, and preparing for the May Community Dinner.



[Click here to read the March 1974 “Ranger!”](#)



# Poke Run Church

# March 2014

	Mon	Tue	Wed	Thu	Fri	Sat
Offering: Session			<b>Daylight Saving Time begins March 9th. Set your clocks ahead!</b>			1
<b>2</b> COMMUNION 8:30 & 11 Worship 10am Sunday School 7pm Bible Study	<b>3</b> 7pm Deacons	<b>4</b> 7pm PW Mtg. 7pm Budget & Finance	<b>5</b> Ash Wednesday 7:30pm @Union	<b>6</b> 6:15pm Bell Choir 7pm Choir 6:30pm SCOUTS	<b>7</b>	<b>8</b> Turn your clocks ahead tonight!
<b>9</b> COMMUNION 8:30 & 11 Worship 10am Sunday School 7pm Bible Study	<b>10</b> 7pm Mission & Stewardship	<b>11</b> 7pm Session	<b>12</b> NOON— Soup for the Soul	<b>13</b> 6:15pm Bell Choir 7pm Choir 6:30pm SCOUTS	<b>14</b> 6:30PM SCOUTS	<b>15</b>
<b>16</b> 8:30 & 11 Worship 9:45 Sunday School 7pm Bible Study 6pm SCOUTS	<b>17</b> 10am Congregational Life	<b>18</b>	<b>19</b> Lenten Service 7:30pm at Pine Run	<b>20</b> 6:15pm Bell Choir 7pm Choir 6:30pm SCOUTS	<b>21</b>	<b>22</b>
<b>23</b> 8:30 & 11 Worship 9:45 Sunday School 7pm Bible Study	<b>24</b>	<b>25</b>	<b>26</b>	<b>27</b> 6:15pm Bell Choir 7pm Choir 6:30pm SCOUTS 7pm Trustees	<b>28</b> 6:30PM SCOUTS	<b>29</b>
<b>30</b> 8:30 & 11 Worship 9:45 Sunday School 7pm Bible Study			<b>Ranger Deadline for April:</b> <b>March 24th— Please contact the office if you have anything to share!</b>			

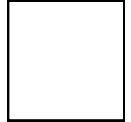
Poke Run Presbyterian Church

1091 Poke Run Church Rd.

Phone: 724-327-5563

E-mail: pokerun@windsteam.net

www.pokerunchurch.com



Address Service Requested

Do you receive your Poke Run Ranger by regular mail? If you are able to receive it by email—just think, you would receive it FASTER and view it IN COLOR!



Check out Poke Run's "revamped"  
Website—

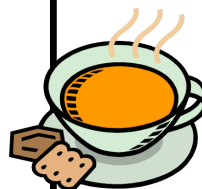
[Click Here](#)

[www.pokerunchurch.com](http://www.pokerunchurch.com)



Join us on Sunday for Worship at  
8:30am and 11:00 am!

Please join us for our  
monthly free



Community

"Soup for the Soul"

Luncheon

AND BRING A FRIEND!!!!

March 12, 2014

"New England Clam Chowder!"

Doors open at 11:30am

Soup's on at NOON!